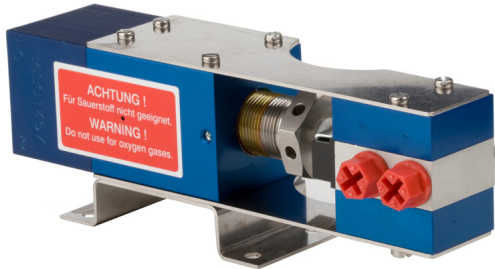


AIR PILOT SWITCHES

PRESSURES FROM 145 TO 14,500 PSI



- Air pilot pressure switches are pressure sensing devices with an air valve, used to turn air driven gas boosters, liquid pumps and air amplifiers on/off at a desired set pressure by controlling a pneumatic signal to the unit's air pilot control feature.
- Units can operate at their maximum drive air pressure, achieving desired outlet set pressure as rapidly as possible.
- Switch resets in approximately 10% drop in set pressure, for the controlled unit restart.
- Externally adjustable under pressure
- Normally Open switches close upon reaching set pressure (typically used to stop on pressure increase when the desired high pressure is achieved).
- Normally Closed switches open upon reaching set pressure (typically used to stop unit on pressure decrease, such as low bottle supply pressure).

Air Pilot model generator

APS-.....-.....-.....

Switch Position

- NO - Normally Open
- NC - Normally Closed

Special versions

- O2 - Cleaned for oxygen service, 316 stainless steel body
- SS - 316 stainless steel body

Connections (Air ports are 1/8" BSPP)

- 4B - 1/4" BSPP with outer seal
- 4P - 1/4" FNPT
- 4M - 1/4" Medium pressure coned and threaded

Pressure Ranges

- 10-30 - between 10 and 30 bar (145-435 psi)
- 30-100 - between 30 and 100 bar (435 - 1450 psi)
- 100-300 - between 100 and 300 bar (1450 - 4350 psi)
- 150-400 - between 150 and 400 bar (2175-5800 psi)
- 300-1000 - between 300 and 1000 bar (4350-14,500 psi)

Typically stocked switches

- APS-10-30-4P-NO
- APS-10-30-4P-NC
- APS-30-100-4P-NO
- APS-30-100-4P-NC
- APS-150-400-4P-NO
- APS-150-400-4P-NC
- APS-100-300-4P-NO
- APS-100-300-4P-NC
- APS-300-1000-4P-NO
- APS-300-1000-4P-NC
- APS-10-30-4B-O2-NC
- APS-100-300-4B-O2-NO

TECHNICAL INFORMATION

Materials

- Body (Standard).....Aluminum Alloy
- Body (Optional).....316 Stainless Steel
- Piston.....440-B
- Seal.....PTFE with T46 Turcon
- Gland.....303 SS
- O-Ring.....Buna-N

Connections

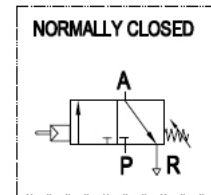
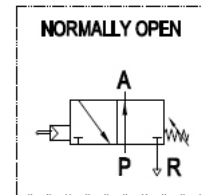
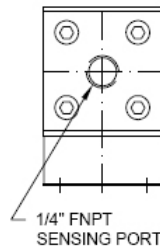
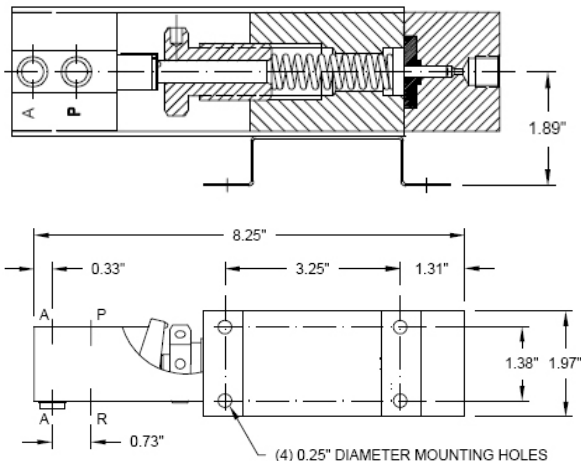
- Sensing Port.....1/4" FNPT
- Air Ports.....1/8" BSPP

Adjustment

Turn adjusting gland (32 mm hex) clockwise to increase, or counter clockwise to decrease the pressure setting. The gland hex also has holes for using a rod or Allen wrench. The dead-band is about 10% of the final set pressure.

DIMENSIONS (inches)

NOTE: Maximum inlet air pressure is 145 PSI
Weight is 3 lbs.



"A" = AIR OUTLET TO PILOT CONNECTION "X" OF PUMP OR BOOSTER (145 PSI MAXIMUM), 1/8" BSPP

"P" = AIR INLET FOR PILOT, 145 PSI MAXIMUM, 1/8" BSPP

"R" = RELEASE VENT OUTLET, 1/8" BSPP

SENSING PORT = 1/4" FNPT

NOTE: Dimensions are subject to change.
Consult Factory.