

# MAXIMATOR®

## Maximum Pressure.

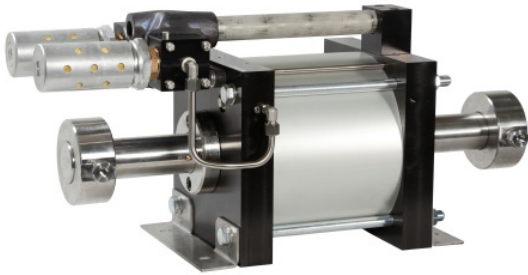


High Pressure Technology • Testing Equipment  
Hydraulics • Pneumatics

### Technical Data Sheet

GPD260

» Oil and Water Service



GPD260  
double acting, single air drive head

#### Technical Data:

Air drive pressure:	1-10 bar / 14,5 - 145psi
Calculated Outlet Pressure at an air drive of 10 bar/145 psi:	2770 bar/ 40165 psi
Pressure ratio:	1: 277
Displacement volume/double stroke	48 cm <sup>3</sup> / 2,9 cu.inch

#### Connections:

Inlet:	BSP 1/4"
Outlet:	6H (3/8")
Air drive:	BSP 3/4"
Maximum operating temperature:	60°C
Net weight:	58 kg

Pressure and flow performances, please see enclosed graph.



Pumps of the GPD Series that are marked with an EX sign and are supplied with a declaration of conformity as defined in 94/9/EC may be used in areas subject to explosion hazards. They are in conformity to Group II Category 2G Explosion group IIC constructive safety.

#### Wetted materials of construction:

Seal package:	GPD 260: UHMWPE, FKM
Pump Body:	1.4571
Piston:	1.4301 (coated)
Fittings:	17-4 PH

#### Approximate Dimensions:

Height:	343 mm
Depth:	300 mm
Width:	777 mm

#### Available Options:

Inlet and Outlet piping to one common inlet and one common outlet port

#### Available Accessories:

Air control units with filter pressure regulator, control pressure gauge and shut off valve:	GPD260 with C2
To protect the pump against excessive outlet pressures or to limit the outlet pressure, a safety valve can be fitted to the air control unit in the air drive line:	GPD260 with C2/SVair (The required outlet pressure has to be indicated.)

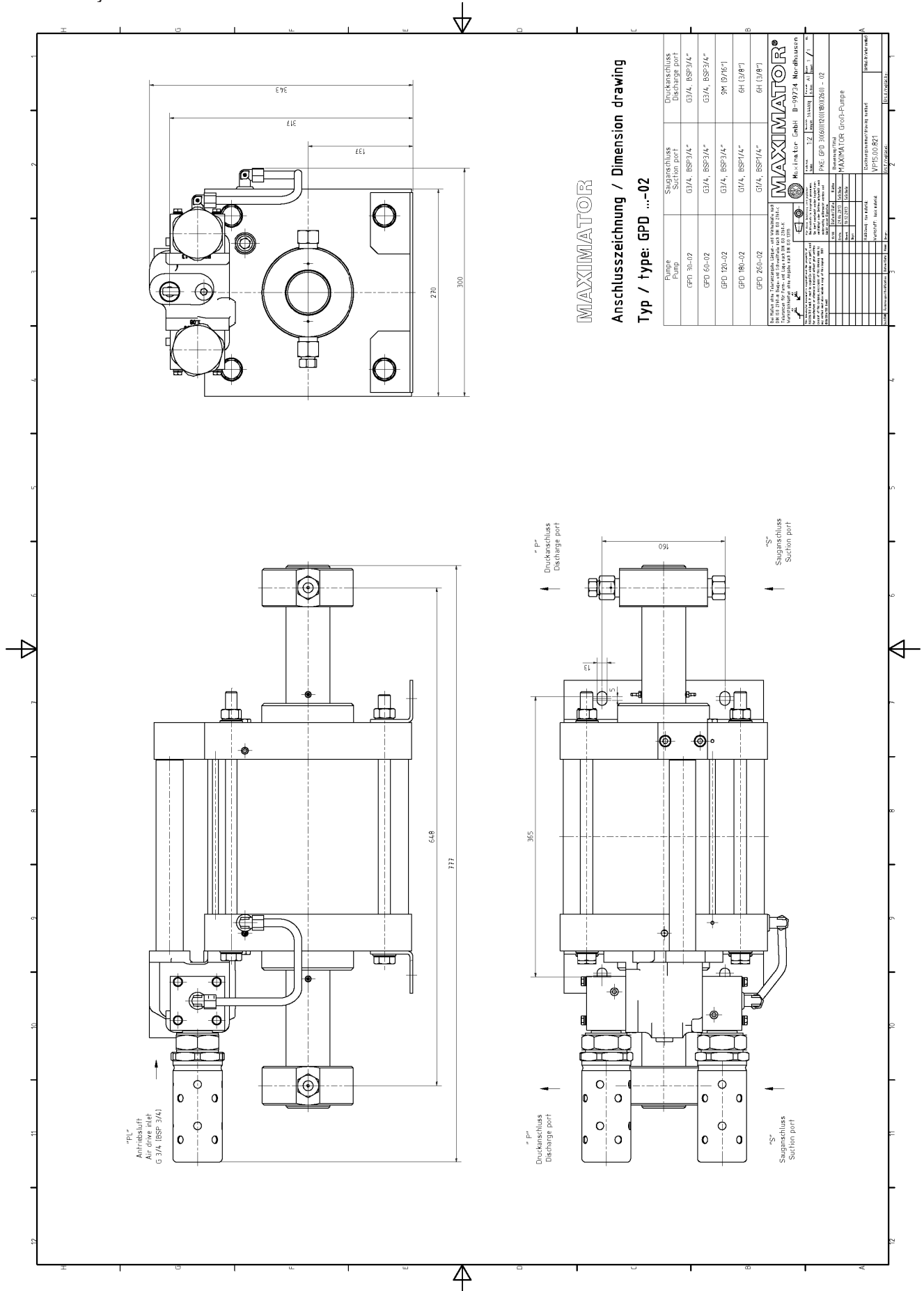
**Please consult factory for more information.** All technical and dimensional information subject to change. All General Terms and Conditions of sale, including limitations of our liability, apply to all products and services sold.

# MAXIMATOR®

## Maximum Pressure.



High Pressure Technology • Testing Equipment  
Hydraulics • Pneumatics



MAXIMATOR

Anschlusszeichnung / Dimension drawing

Typ / type: GPD ...-02

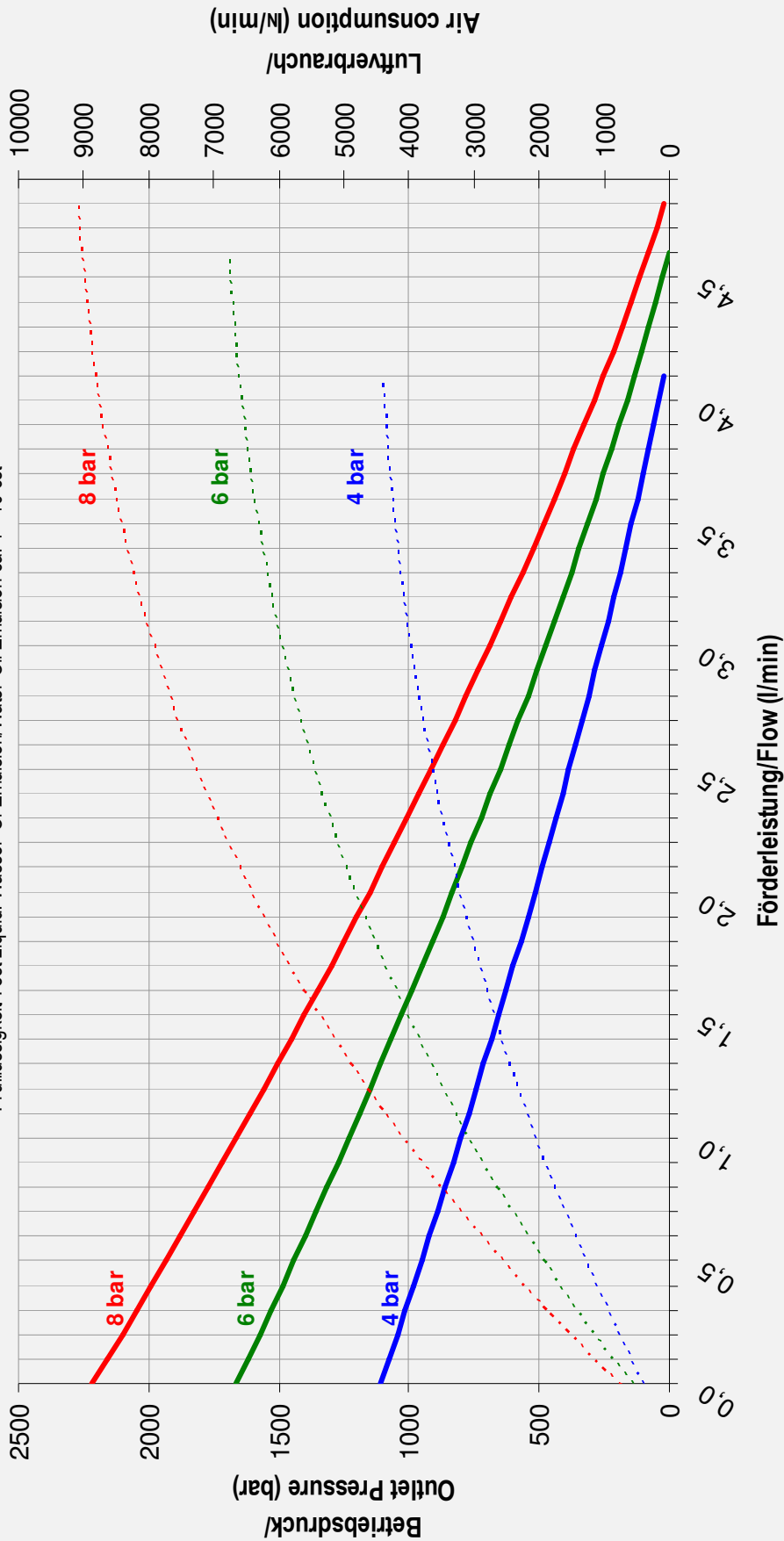
Pumpe Pump	Sauganschluss Suction port	Druckanschluss Discharge port
GPD 30-02	G3/4, BSF3/4"	G3/4, BSF3/4"
GPD 60-02	G3/4, BSF3/4"	G3/4, BSF3/4"
GPD 120-02	G3/4, BSF3/4"	3M (3/8")
GPD 180-02	G1/4, BSF1/4"	6H (3/8")
GPD 260-02	G1/4, BSF1/4"	6H (3/8")

**MAXIMATOR®**  
 Die 100 % Aluminium-Druckpumpe mit 100 % Stahl-  
 Bauteilen für alle Anwendungen im Bereich  
 Hochdruck- und Hochdruck-Testtechnik  
 Maximator GmbH, Markt 100 18 02 030  
 99734 Nordhausen, Deutschland  
 Tel. +49 3631 9533-0 Fax +49 3631 9533-5010  
 www.maximator.de info@maximator.de

Max. line for: Gmbli B-99734 Nordhausen  
 PKE GPD 30(60)(120)(180)(260) - 02  
 Maximator GmbH  
 MAXIMATOR Groß-Pumpe  
 VP05.00.821  
 02/04/2013

### Leistungsdiagramm/Performance Graph GPD 260

Prüfflüssigkeit/Test Liquid: Wasser-Öl-Emulsion/Water Oil Emulsion ca. 1 - 10 cst



- Betriebsdruck bei/Outlet Pressure at 4 bar
- Betriebsdruck bei/Outlet Pressure at 6 bar
- Betriebsdruck bei/Outlet Pressure at 8 bar
- - - Luftverbrauch bei/Air consumption at 4 bar
- - - Luftverbrauch bei/Air consumption at 6 bar
- - - Luftverbrauch bei/Air consumption at 8 bar