

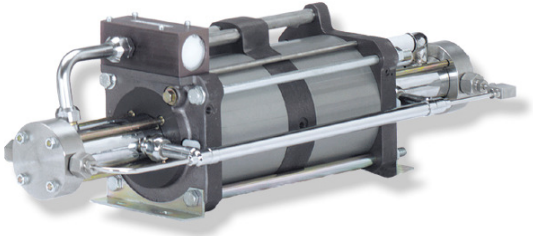
# MAXIMATOR®

## Maximum Pressure.



High Pressure Technology • Testing Equipment  
Hydraulics • Pneumatics

### Technical Data Sheet



DLE 30-75-2  
double acting, double air drive head  
two stages

### Gas booster DLE 30-75-2-25

#### Technical Data:

Air drive pressure pL:	1-10 bar / 14,5 - 145psi
Pressure ratio i:	1:60 / 1:150
Compression ratio	1:50
Stage pressure ratio:	1:2.5
Minimum suction pressure pA:	15 bar
Maximum suction pressure pA:	24* air drive pressure pL
Maximum outlet pressure pB:	1,800 bar (25,000 psi)
Displacement volume/double stroke:	60 cm <sup>3</sup>
Stall pressure:	PB = 150* pL + 150/60*pA

#### Standard Connections:

Air drive:	3/4 BSP
DLE 30-75-2 (-GU)	Inlet = 1/4BSP Outlet = 9/16-18 UNF
Maximum operating temperature	100°C
Net weight:	25,3 kg

Pressure and flow performances, please see enclosed graph.

#### Materials of construction hp section DLE 30-75-2:

Standard seal package:	PTFE, Viton
Compressor head:	1.4305 (DLE30)/ 1.4542 (DLE75)
HP cylinder:	1.4542
HP piston:	1.4305
Fittings:	1.4305 (DLE30)/ 1.4542 (DLE75)
Balls:	1.4034
Springs:	1.4310

#### Approximate Dimensions:

Length:	815 mm
Width:	210 mm
Height:	233 mm

#### Available Accessories:

Air control units with filter pressure regulator, control pressure gauge and shut off valve:	DLE 30-75-2 with C2
To protect the booster against excessive outlet pressures or to limit the outlet pressure, a safety valve can be fitted to the air control unit in the air drive line:	DLE 30-75-2 with C2/SVair (The required outlet pressure has to be indicated.)

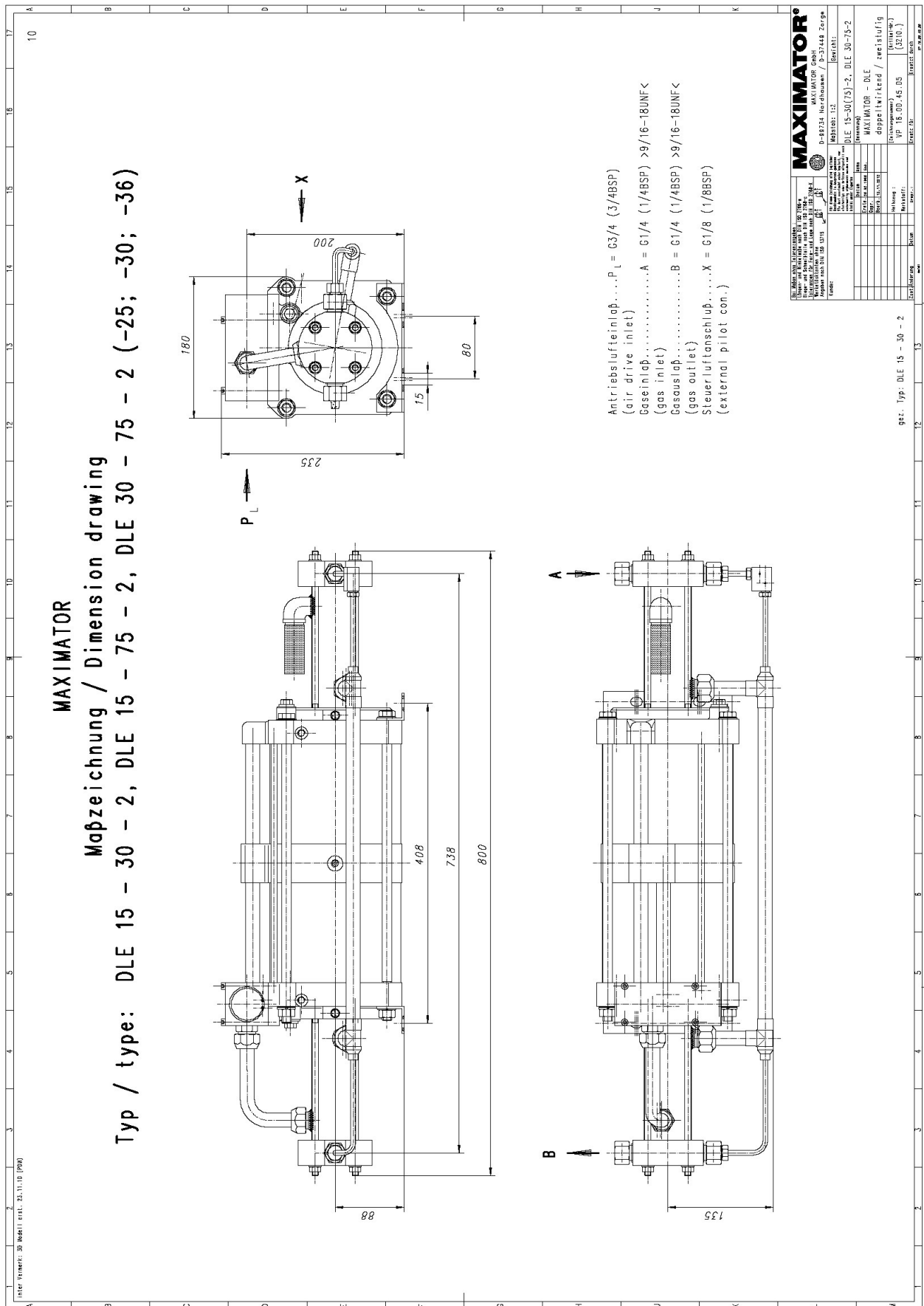
**Please consult factory for more information.** All technical and dimensional information subject to change. All General Terms and Conditions of sale, including limitations of our liability, apply to all products and services sold.

# MAXIMATOR®

## Maximum Pressure.



High Pressure Technology • Testing Equipment  
Hydraulics • Pneumatics



# MAXIMATOR®

## Maximum Pressure.



High Pressure Technology • Testing Equipment  
Hydraulics • Pneumatics

