



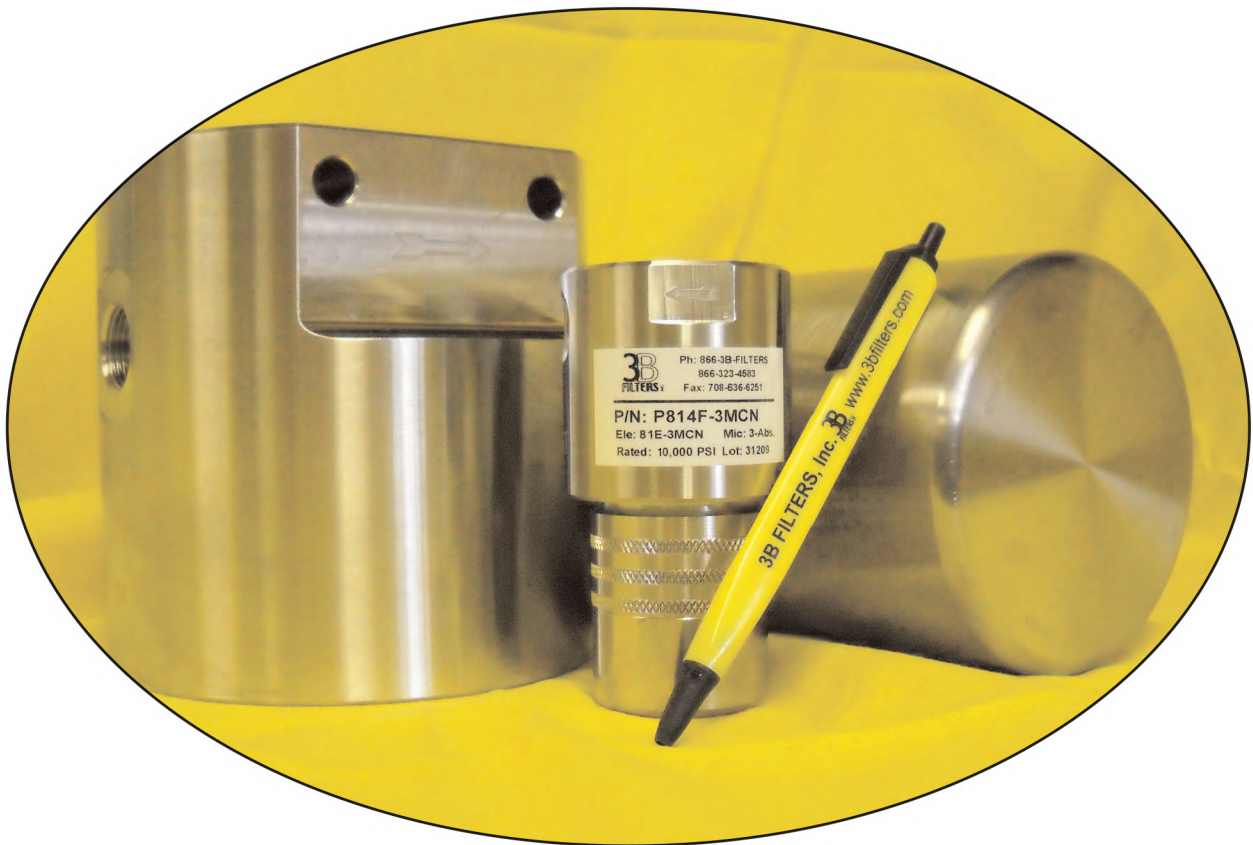
High Pressure Technologies, LLC.

HPT

26364 Ruether Ave
Santa Clarita, CA 91350 U.S.A.
Tel: (661)-251-5069
Fax: (661)-251-6745
<http://www.highpressuretech.com>

8100 SERIES

Mini Tee-Type Filters (2.0" x 3.5")
Up To 10,000 PSI Operating



HOW TO ORDER

EXAMPLE FILTER ASSEMBLY

<u>G</u>	<u>81</u>	<u>4F</u>	-	<u>3M</u>	<u>D</u>	<u>S</u>
<u>A</u>				<u>B</u>	<u>C</u>	<u>D</u>

EXAMPLE ELEMENT ASSEMBLY

<u>81E</u>	-	<u>1PM</u>	<u>F</u>	<u>S</u>	*
		<u>B</u>	<u>C</u>	<u>D</u>	-

* Add GS for water removal screen

A

HOUSING MATERIAL	
G	316 SS 6,000-PSI
P	17-4 PH 10,000-PSI

C

COLLAPSE RATING	
CODE	DESCRIPTION
A	Cellulose 150-PSI
B	Cellulose 300-PSI
C	Microglass 300-PSI
D	Microglass 3,250-PSI
E	304 Wire Mesh 4,5000-PSI
F	316 Sintered 2,000-PSI

B

MICRON RATING						
CODE	NOM.	ABS	C	M	PM	W
1PM	0.2	0.5			x	
1M	N/A	1		x		
2PM	0.5	1			x	
3M	N/A	3		x		
3PM	1	3			x	
4PM	3	5			x	
6M	N/A	6		x		
10W	2	10				x
3C	3	10	x			
12M	N/A	12		x		
18W	5	18				x
10C	10	25	x			
25M	N/A	25		x		
25W	10	25				x
75W	40	75				x
100W	75	100				x
200W	100	200				x

C = Cellulose
M = Microglass
PM = 316 Sintered Metal
W = 304 Woven Wire Mesh

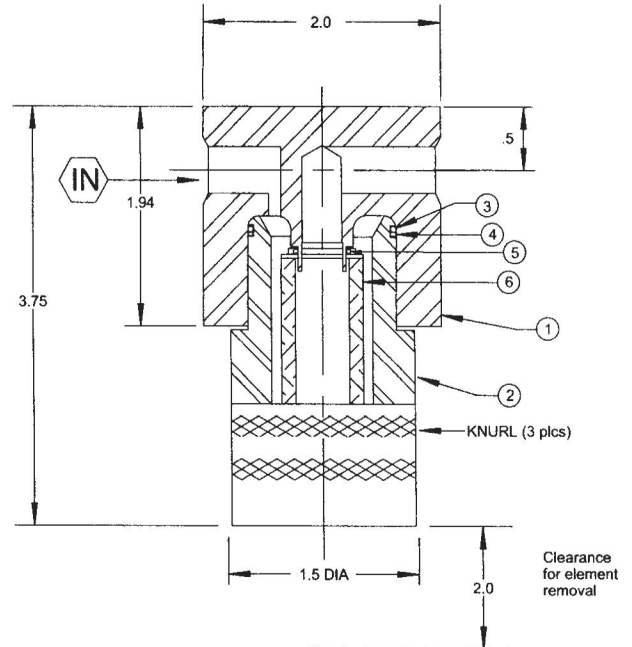
D

O-RING SPECIFICATIONS		
CODE	MATERIAL	TEMPERATURES
N**	Nitrile(Buna)	-40° to 250°F
V**	Viton®	-20° to 400°F
E	Ethylene Propylene	-60° to 300°F
T	Teflon®	-320° to 450°F
K	Kalrez®	-40° to 550°F
S	Teflon Encapsulated Viton Core	-10° to 300°F

**for 90- durometer add 9 to code (example: V9)
©DuPont

Specifications

	G	P
<u>Housing</u>		
<u>Material</u>	316 SS	17-4PH
<u>Operating (psi)</u>	6,000	10,000
<u>Proof (psi)</u>	7,500	15,000
<u>Burst (psi)</u>	24,000	40,000
<u>Weight (lbs.)</u>	2.5	2.5
<u>Port Size</u>	1/4 NPT	1/4 NPT



**Consult Factory
on use of Teflon
Over 6,000 - PSI**